

➔ Hoog water op de Mississippi

Bart Vonk

Anco vd Heuvel

Frank Jansen

Marian Bootink

Raymond de Landmeter

Roald van Gameraen

Wijnand Evers



stowa



UNIE VAN
WATERSCHAPPEN



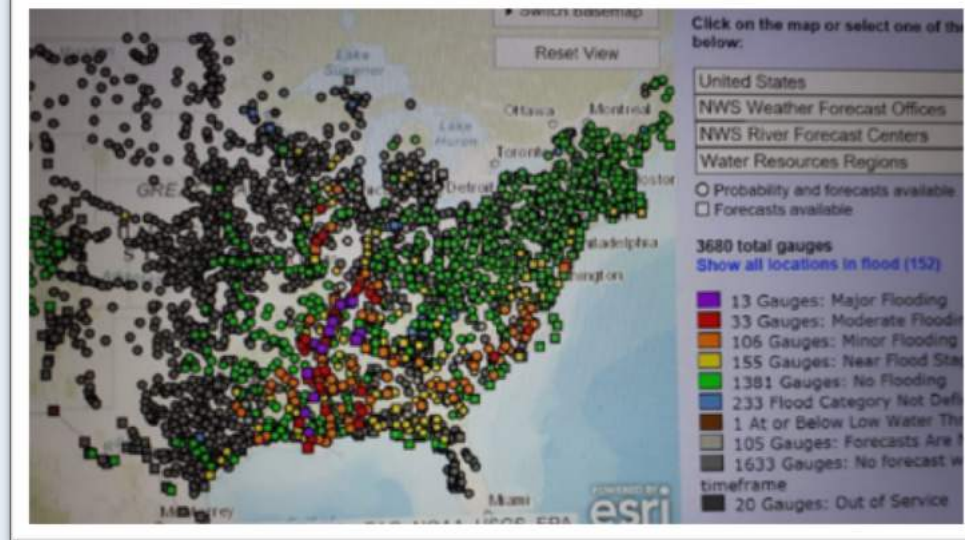
Waarom in buitenland gaan observeren?

- Kleine kans met enorme gevolgen

	score
Informatie (expliciete kennis)	++
Ervaring	-
Vaardigheid	-
Attitude	+/-

- Olympisch niveau getraind crisisexpertise team waterkeringen
- Internationaal samenwerken biedt kansen
- USA en Engeland hebben vergelijkbare waterkeringen en cultuur
- **Incident Observation Protocol:** effent het pad

Het belletje



- Dinsdagavond 26 feb: RWS krijgt e-mail USACE
- Op twee na hoogste afvoer op de Lower Mississippi
- Kom kijken: District Mississippi Valley of Memphis
- Woensdag vormen we een gemengd team
 - 2 RWS en 5 Waterschappers
 - dijkinspecteurs, crisismanagers, ingenieurs
- We regelen tickets, Esta, hotel
- We maken een programma
- Zondagochtend vertrek vanaf Schiphol



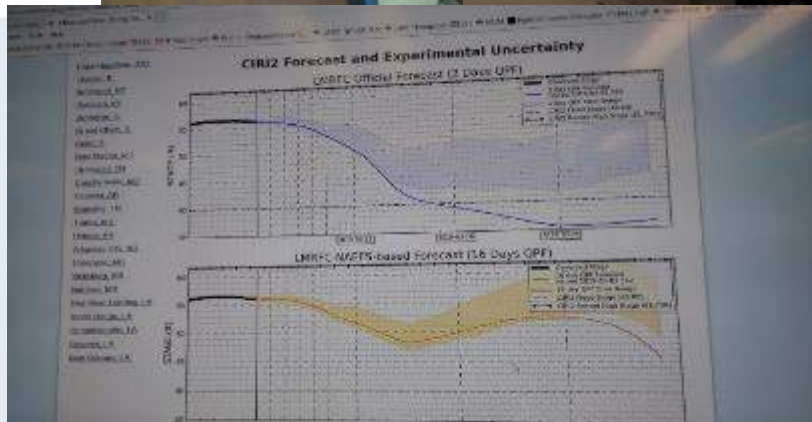
stowa

Crisis Management Briefing room



MVM FLOODFIGHT BATTLE RHYTHM

- 0600 MVM EOC Shift Start
- 0600 Morning Accountability Due
- 0800 Field Reports Due
- 1030 MVD EM Update (Mon-Fri)
- 1400 MVM CMT Brief
- 1500 MVM Stakeholders/Partners Meeting
- 1700 Crisis Action Team Daily Meeting
- 1800 SITREPs due to MVD
- 1830 MVM EOC Shift End



'Watermelon'

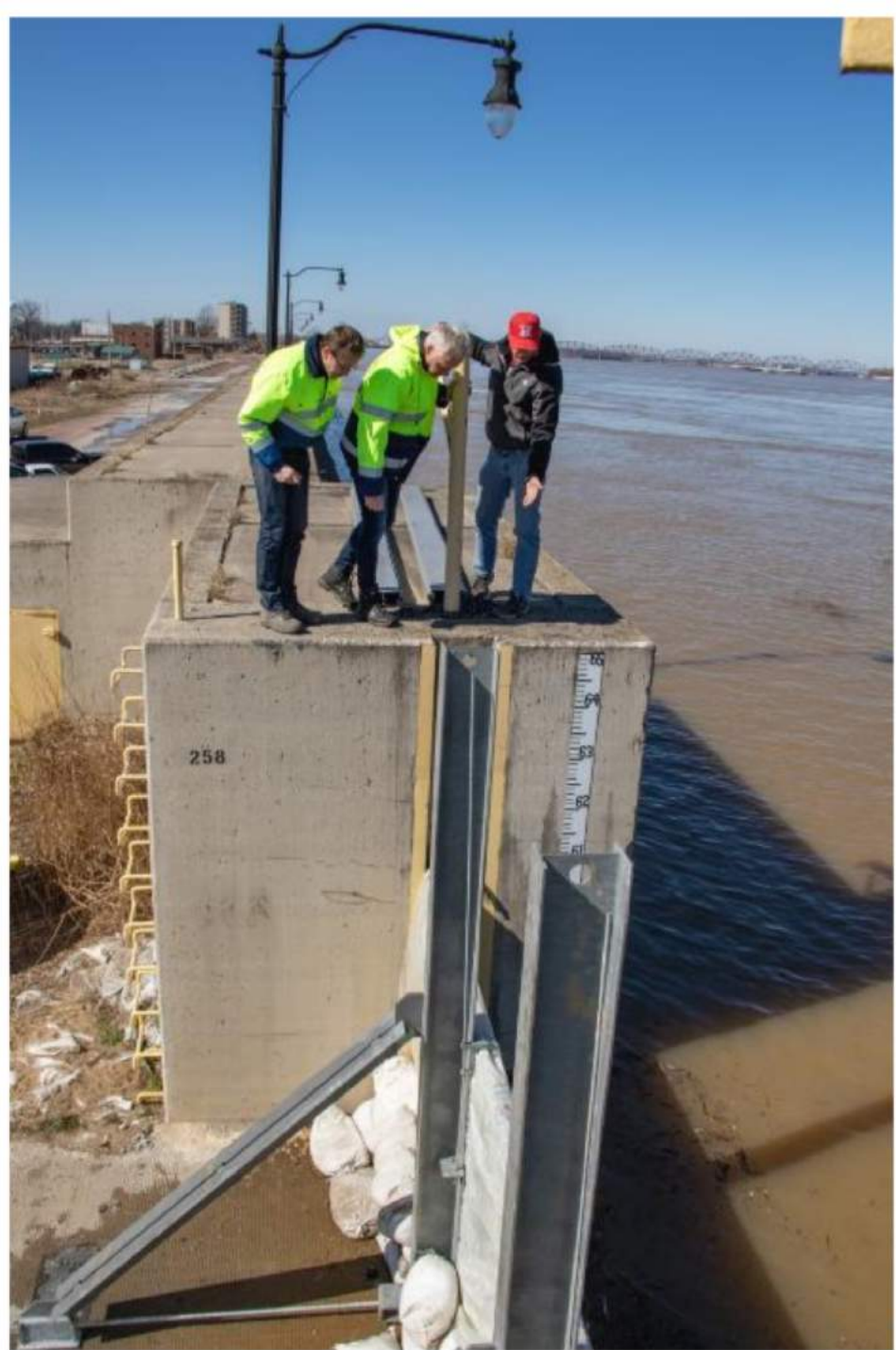
stowa

Buiten



Large Sand Boil Cairo Water Plant













Last 4 days 😊	Next 4 month
<ul style="list-style-type: none"> - Enthusiastic, inspired, professional team of subject matter experts (as well in office as in field) - You have a clear vision and work to that with specific goals (evidence database) - In control, effective measures since 2011 - Attention for levees, many sand boils - Crisis meetings in 30 minutes-factsheets - Teleconferencing works - ENglink esp. watermelon (cap. Management) - Transparency and open in sharing info 	<ul style="list-style-type: none"> - Telling the story in NL and UK - Collaboration works - Sharing agenda (meetings, crises) - Think big: area-measures instead of every single sand boil - Pump hose (poly) instead of steel pipes - Mobile barriers-check study
To consider	Opportunities/ Challenges
<ul style="list-style-type: none"> - Relief wells - Archive the maps in drawers at the yard - 12 hour shifts for 30 days - People later in meeting - The office of Emergency operation centre is small with little to no daylight 	<ul style="list-style-type: none"> - Make public proud - Tell the story (in historic perspective) - Upstream surprises - Collaboration on innovative solutions - What if..

En nu ..

- ⇒ Doorgaan met kennisuitwisseling
- ⇒ Opgedane kennis in NL, VK en USACE
- ⇒ Zoeken naar nieuwe mogelijkheden
- ⇒ Elkaar uitnodigen om te observeren bij komende hoogwaters in VK, Nederland en USA
- ⇒ En bij crisisoefeningen, zoals bij de HedwigeProsperpolder





Our Vision

We will be the best engineering team, working with our partners to provide innovative solutions, improving the quality of life in our region today and tomorrow.





stowa@stowa.nl www.stowa.nl

TEL 033 460 32 00 FAX 030 460 32 01

Stationsplein 89 3818 LE AMERSFOORT

POSTBUS 2180 3800 CD AMERSFOORT