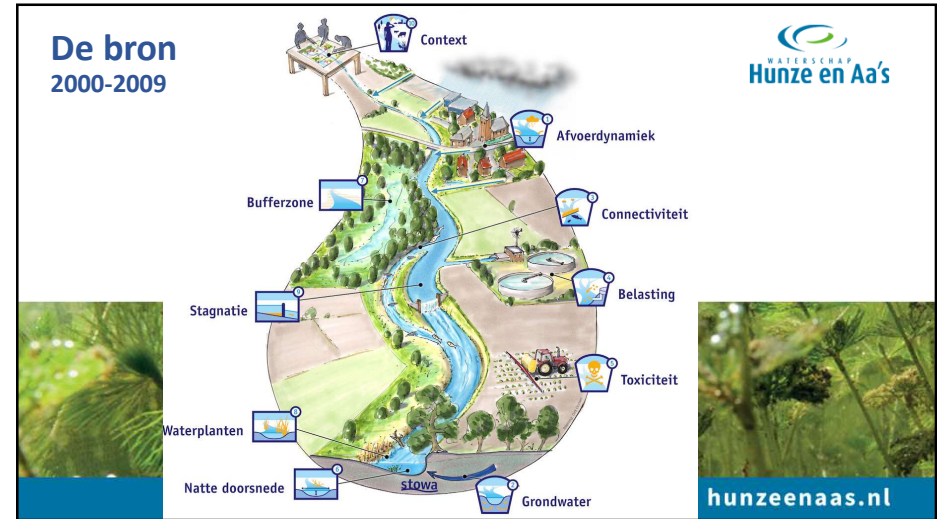
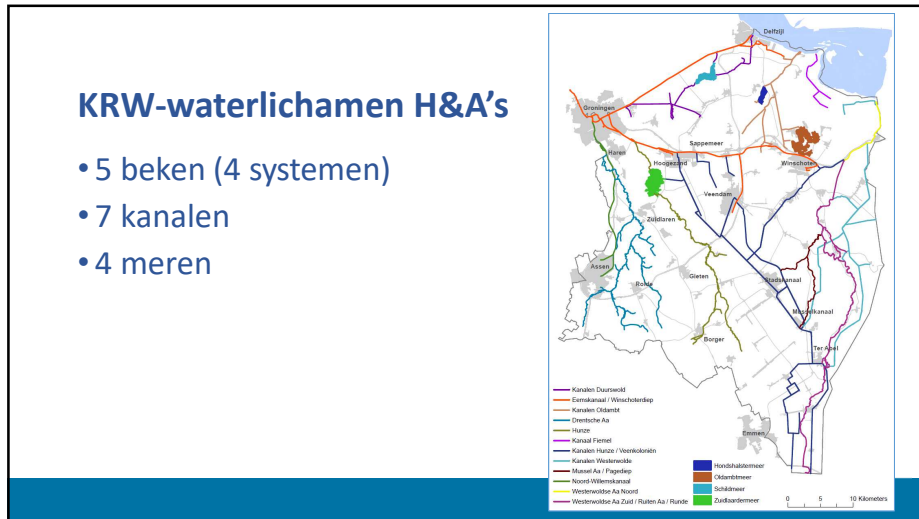




1



2



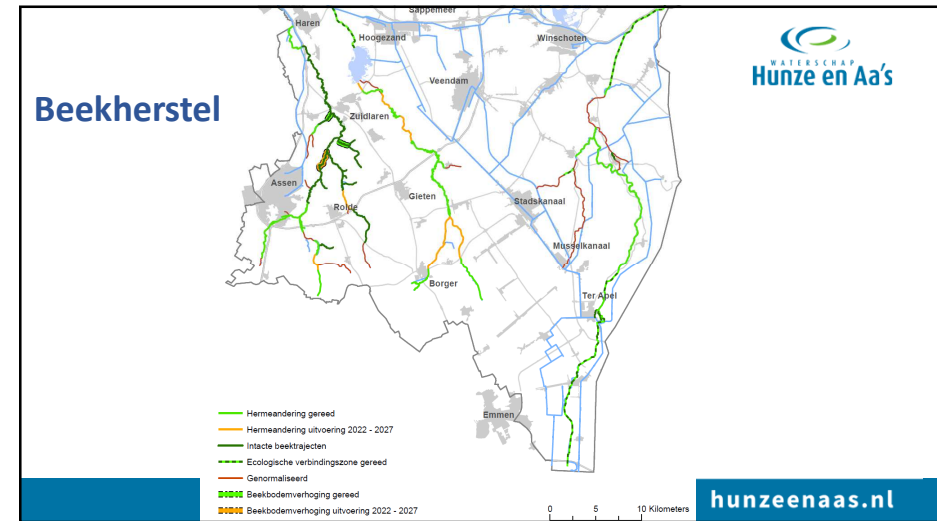
3



4



5



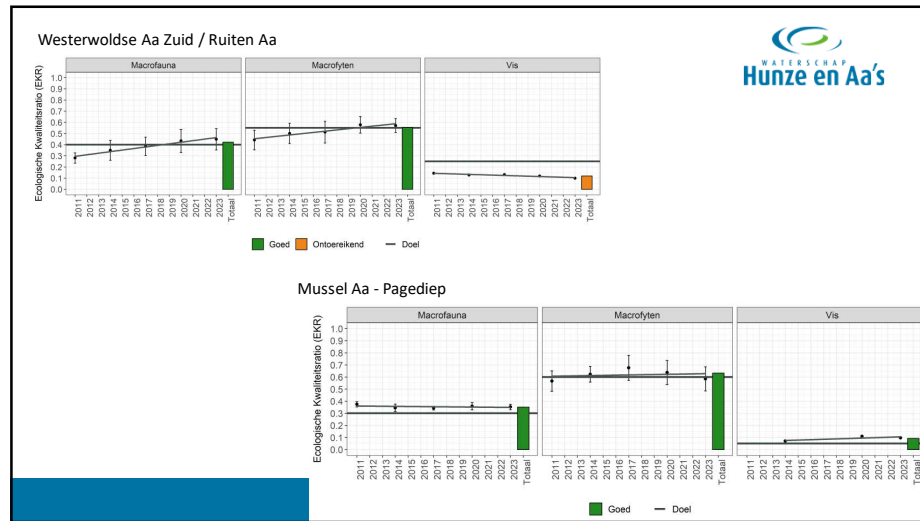
6



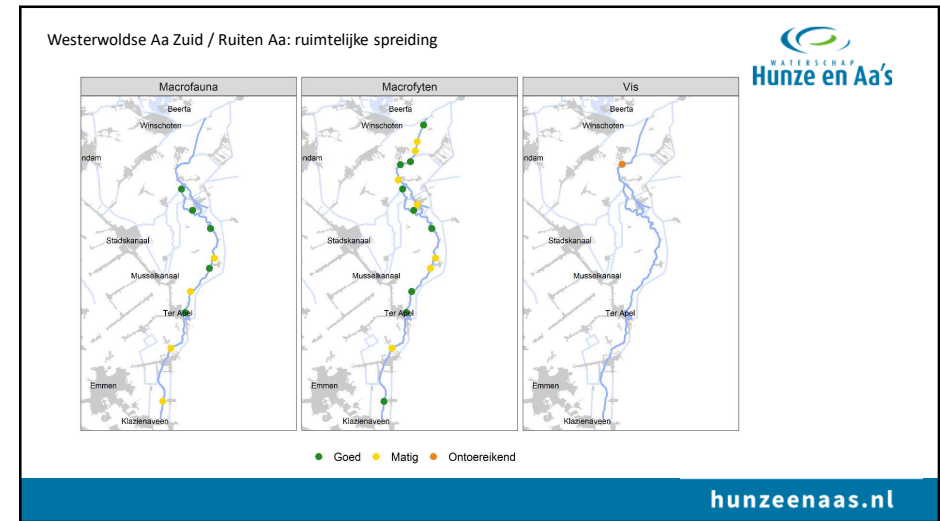
7



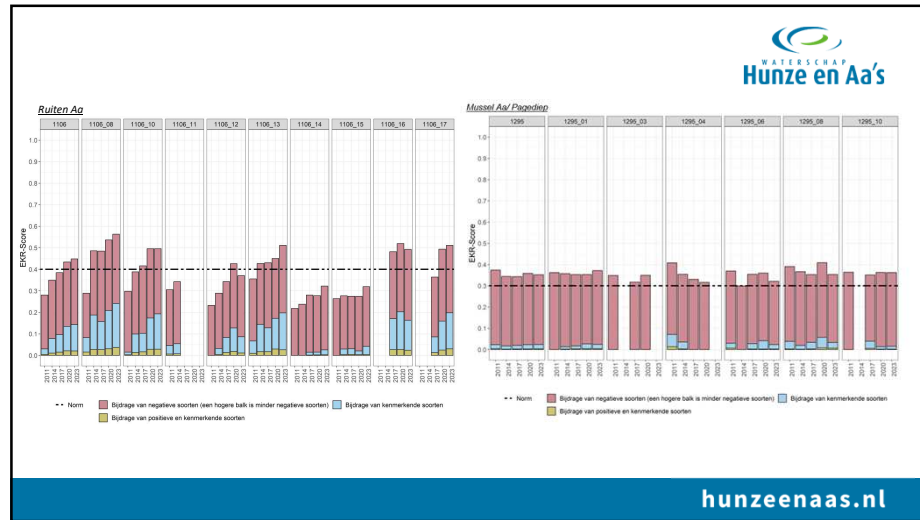
8



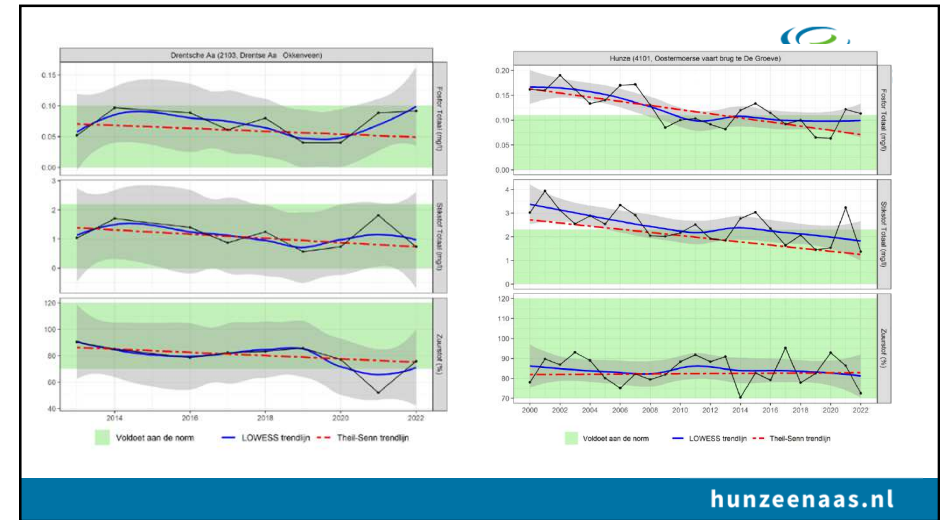
9



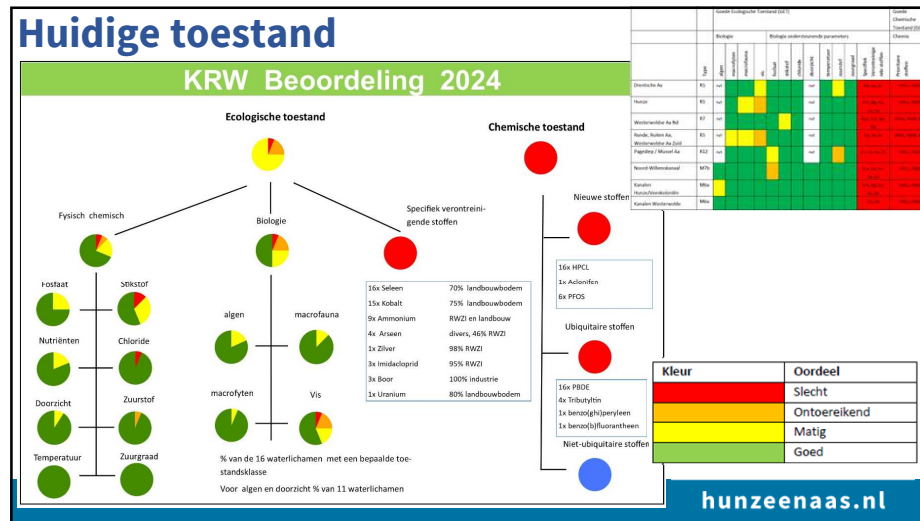
10



11



12



13

De benedenloop 2020-2027 (en verder)

- Restant inrichtingsmaatregelen
- Extra inzet nav KRW-impuls, oa aandacht voor stoffen
- Verantwoording 2027
- Juridische risico's

WATERSCHAP Hunze en Aa's

Systemkenmerken
Processen
Milieufactoren
Soorten

14

Verwacht doelbereik 2027

| Waterlichaam | Type | Ecologische Toestand | | | | | | | | | | Chemische Toestand | | | | | |
|--|------|----------------------|-----------|------------|-----|---------|----------|----------|-----------|-------------|-----------|--------------------|------------------------------------|------------------|--|--|--|
| | | algen | macrofyte | macrofauna | vis | fosfaat | stikstof | chloride | doorzicht | temperatuur | zuurgraad | zuurstof | Specifiek verontreinigende stoffen | Priority stoffen | | | |
| Drentsche Aa | R5 | rvt | | | vb | | | | rvt | | | | | | | | |
| Hunze | R5 | rvt | | AO | | | | | rvt | | | | | | | | |
| Westerwoldse Aa Nid | R7 | rvt | | | | | | | rvt | | | | | | | | |
| Runde, Ruiten Aa, Westerwoldse Aa Zuid | R5 | rvt | vb | vb | AO | | | | rvt | | | | | | | | |
| Pagediep / Mussel Aa | R12 | rvt | | | | | | | rvt | | AO | | | | | | |
| Noord-Willemskanaal | M7b | | | | | st | | | | | | | | | | | |
| Kanalen Hunze/Veenkoloniën | M6a | st | | | | | | | | | | | | | | | |
| Kanalen Westerwoldse | M6a | | | | | | | | | | | | | | | | |
| Eemskanaal, Wisschoterdiep | M7b | | | | | | | | | | | | | | | | |
| Kanaal Fielde | M6a | | | | | | | | | | | | | | | | |
| Kanalen Duurswold | M6a | | | | | | | | | | | | | | | | |
| Kanalen Oldambt | M6a | | | | | | | AO | | | | | | | | | |
| Schildmeer | M14 | | | AO | | | | | | | | | | | | | |
| Zuidlaardermeer | M14 | st | | AO | st | | | | | | | | | | | | |
| Hondshoftermeer | M14 | vb | vb | vb | st | | | | | | | | | | | | |
| Oldambtmeer | M14 | | | AO | vb | | | | | | | | | | | | |

WATERSCHAP Hunze en Aa's

hunzeenaas.nl

15

Resterende uitdagingen

- Grondverwerking Hunze en Drentse Aa
- Maar ook exoten
- En bevers

WATERSCHAP Hunze en Aa's

16

